

IUS-3080/3062 Series

>> Industrial 8-port Managed μ -Ring Ethernet Switch

- World's fastest Redundant Ethernet Ring: μ -Ring (Recovery time < 1ms over 500 units of connection)
- Supports **O-Ring**, **Open-Ring**, **O-RSTP**, MSTP/RSTP/STP (IEEE 802.1s/w/D) for Ethernet Redundancy
- Supports SNMP v1/v2c/v3, QoS, IGMP, RMON & Port based/ 802.1Q VLAN Network Management
- Multiple notification for warning of unexpected events
- Web-based, Telnet, Console, CLI, and Windows utility (Open-Vision) configuration
- Complete selection to Support 10/100Base-T(X), 1000 Base-T, 100Base-FX, 1000Base-SX, 1000Base-LX ports
- Triple Redundant DC power inputs



> Features

- World's fastest Redundant Ethernet Ring : **μ -Ring** (Recovery time < 1ms over 500 units of connection)
- **Open-Ring** supports the other vendor's ring technology in open architecture
- **O-RSTP** supports applications with complex topology
- MSTP/RSTP/STP(IEEE 802.1s/w/D)
- IGMP snooping for filtering multicast traffic
- Port Trunking for easy bandwidth management
- SNMP v1/v2c/v3 support for secured network management
- RMON for traffic monitoring
- Event notification through Syslog, Email, SNMP trap, and Relay Output
- Port lock to prevent access from unauthorized MAC address
- Windows utility (Open-Vision) supports centralied management and configuration by Web-based ,Telnet, Console, CLI
- Triple redundant DC power inputs of terminal block and power jack
- Complete combination of 10/100Base-T(X), 100Base-FX, 1000Base-T, 1000Base-SX, and 1000Base-LX ports
- Very wide operating temperature range from -40°C to 70°C
- Rigid IP-30 housing design
- DIN-Rail and panel mounting enabled

> Introduction

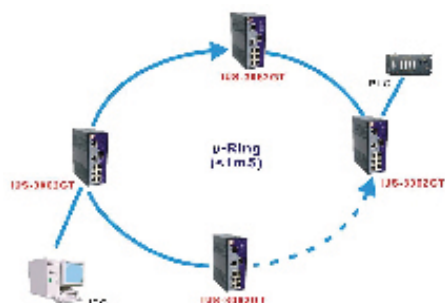
IUS-3080/3062 series is managed Redundant Ring Ethernet switch with 6x10/100Base-T(X) & 2x100Base-FX, 1000Base-T, 1000Base-SX or 1000Base-LX ports. With its most advanced **μ -Ring** technology, IUS-3080/3062 series can protect your mission-critical applications from network interruptions or temporary malfunctions with its maximum 1ms ultra fast recovery **μ -Ring** technology. **μ -Ring** is a ASIC based redundant ring that almost reaches zero packet loss while networking is failure. It guarantees the recovery time is less than 1ms even in Gigabit Ethernet connection. Another innovative Open-Ring technology also supports other vendor's proprietary ring technology. In addition, IUS-3080/3062 series can be managed centralized and convenient by a powerful windows utility — Open-Vision. In addition, the wide operating temperature range from -40°C to 70°C can satisfy most of operating environment. Therefore, IUS-3080/3062 series is the most reliable choices for highly-managed and Fiber Ethernet application.



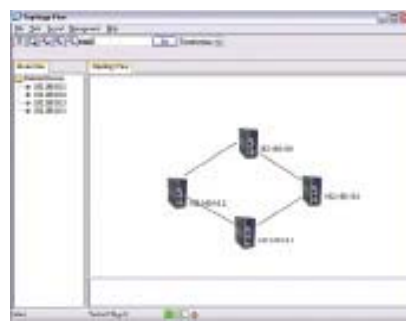
μ -Ring ASIC

> Open-Vision

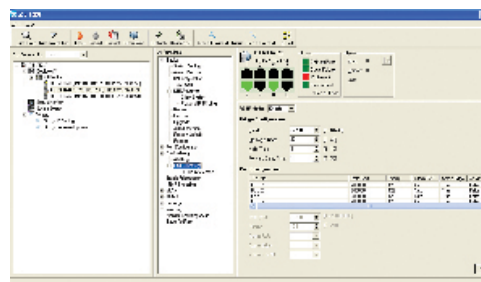
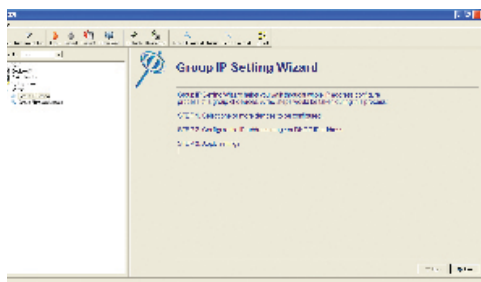
ORing's switches are intelligent switches. Being different from other traditional redundant switches, ORing provides a set of Windows utility (Open-Vision) for users to manage and monitor all of industrial Ethernet switches on the industrial network.



Network connection

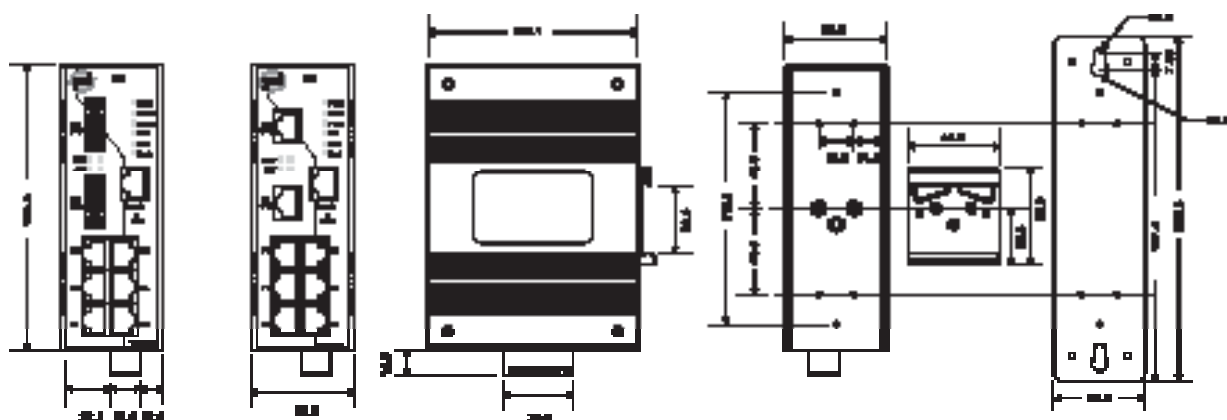


Topology View



Monitoring and Configuration interface

> Dimension



Unit=mm

> Specifications

ORing Switch Model	IUS-3080	IUS-3062GT	IUS-3062FX-MM	IUS-3062FX-SS	IUS-3062GF-MM	IUS-3062GF-SS
Physical Ports						
10/100Base-T(X) Ports in RJ45 Auto MDI/MDIX	8	6	6	6	6	6
1000Base-T Ports in RJ45 Auto MDI/MDIX		2				
100Base-FX Multi-mode ports (2KM, 1310nm, SC connector)			2			
100Base-FX Single-mode ports (30KM, 1310nm, SC connector)				2		
1000Base-SX Multi-mode ports (550M, 850nm, SC connector)					2	
1000Base-LX Single-mode ports (10KM, 1310nm, SC connector)						2
RS-232 Serial Console Port	RS-232 in RJ45 connector with console cable. 9600bps, 8, N, 1					
Technology						
Ethernet Standards	IEEE 802.3 for 10Base-T IEEE 802.3u for 100Base-T(X) and 100Base-FX IEEE 802.3z for 1000Base-X IEEE 802.3ab for 1000Base-T IEEE 802.3x for Flow control IEEE 802.3ad for LACP (Link Aggregation Control Protocol) IEEE 802.1D for STP (Spanning Tree Protocol) IEEE 802.1p for COS (Class of Service) IEEE 802.1Q for VLAN Tagging IEEE 802.1w for RSTP (Rapid Spanning Tree Protocol) IEEE 802.1s for MSTP (Multiple Spanning Tree Protocol) IEEE 802.1X for Authentication IEEE 802.1AB for LLDP (Link Layer Discovery Protocol)					
MAC Table	8192 MAC addresses					
Priority Queues	4					
Processing	Store-and-Forward					
Switch Properties	Switching latency: 7 us Switching bandwidth: 5.6Gbps Max. Number of Available VLANs:4096 IGMP multicast groups: 1024 Port rate limiting: User Define					
Security Feature	Enable/disable ports, MAC based port security Port based network access control (802.1x) VLAN (802.1q) to segregate and secure network traffic Radius centralized password management SNMPv3 encrypted authentication and access security					
Software Features	STP/RSTP (IEEE 802.1D/w) Redundant Ring (O-Ring) with recovery time less than 10ms over 250 units TOS/Diffserv supported Quality of Service (802.1p) for real-time traffic VLAN (802.1Q) with VLAN tagging and GVRP supported IGMP Snooping for multicast filtering Port configuration, status, statistics, monitoring, security					
Network Redundancy	μ-Ring O-Ring Open-Ring O-RSTP STP RSTP MSTP					
LED Indicators						
Power Indicator	Green : Power LED x 3					
R.M. Indicator	Green : Flashing to indicate system operated in μ-Ring Master mode					
μ-Ring Indicator	Green : Indicate system operated in μ-Ring mode					
Fault Indicator	Amber : Indicate unexpected events occurred					
10/100TX RJ45 port Indicator	Green for port Link/Act. Amber for Duplex/Collision					
1000 Base-T / Fiber port Indicator	Green for port Link/Act. Amber for Link					

Fault Contact						
Relay	Relay output to carry capacity of 1A at 24VDC					
Power						
Redundant Input Power	Triple DC inputs. 12-48VDC on 7-pin terminal block, 12-45VDC on power jack					
Power Consumption (Typ.)	5W	8W	9W	9W	7W	7W
Overload Current Protection	Present					
Reverse Polarity Protection	Present on terminal block					
Physical Characteristic						
Enclosure	IP-30					
Dimension (W x D x H)	52(W) x 106.1(D) x 144.3(H) mm (2.05x4.18x5.68 inch.)					
Weight (g)	714 g	726 g	739 g	739 g	744 g	744 g
Environmental						
Storage Temperature	-40 to 85°C(-40 to 185°F)					
Operating Temperature	-40 to 70°C (-40 to 158°F)					
Operating Humidity	5% to 95% Non-condensing					
Regulatory approvals						
EMI	FCC Part 15, CISPR (EN55022) class A					
EMS	EN61000-4-2 (ESD), EN61000-4-3 (RS), EN61000-4-4 (EFT), EN61000-4-5 (Surge), EN61000-4-6 (CS), EN61000-4-8, EN61000-4-11					
Shock	IEC60068-2-27					
Free Fall	IEC60068-2-32					
Vibration	IEC60068-2-6					
Safety	EN60950					
Warranty	5 years					

> Ordering Information

IUS-3 **AA** **B** **CC** - **DD** - **EE**

Code Definition	10/100TX Port Number	Additional Port Number	Additional Port Type	Fiber Optical Mode	Fiber Optical Connector
Option	- 08 : 8 ports - 06 : 6 ports	- 0 : 0 port - 2 : 2 ports	- GT : 10/100/1000Base-T(X) - FX : 100FX - GF : 1000Base-X	- MM : Multi-mode - SS : Single-mode	- SC : SC connector

Available Model	Model Name	Description
	IUS-3080	Industrial 8-port Managed μ-Ring Ethernet Switch with 8x10/100Base-T(X)
	IUS-3062GT	Industrial 8-port Managed μ-Ring Ethernet Switch with 6x10/100TX & 2x1000Base-T
	IUS-3062FX-MM-SC	Industrial 8-port Managed μ-Ring Ethernet Switch with 6x10/100TX & 2x100FX (Multi-mode)
	IUS-3062FX-SS-SC	Industrial 8-port Managed μ-Ring Ethernet Switch with 6x10/100TX & 2x100FX (Single-mode)
	IUS-3062GF-MM-SC	Industrial 8-port Managed μ-Ring Ethernet Switch with 6x10/100TX & 2x1000SX (Multi-mode)
	IUS-3062GF-SS-SC	Industrial 8-port Managed μ-Ring Ethernet Switch with 6x10/100TX & 2x1000LX (Single-mode)